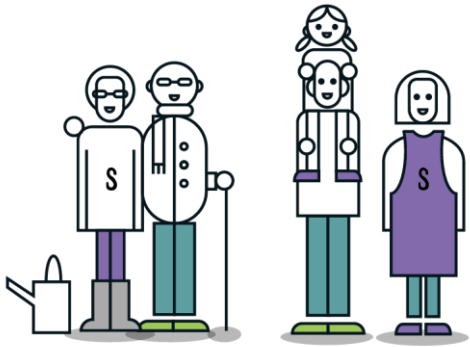


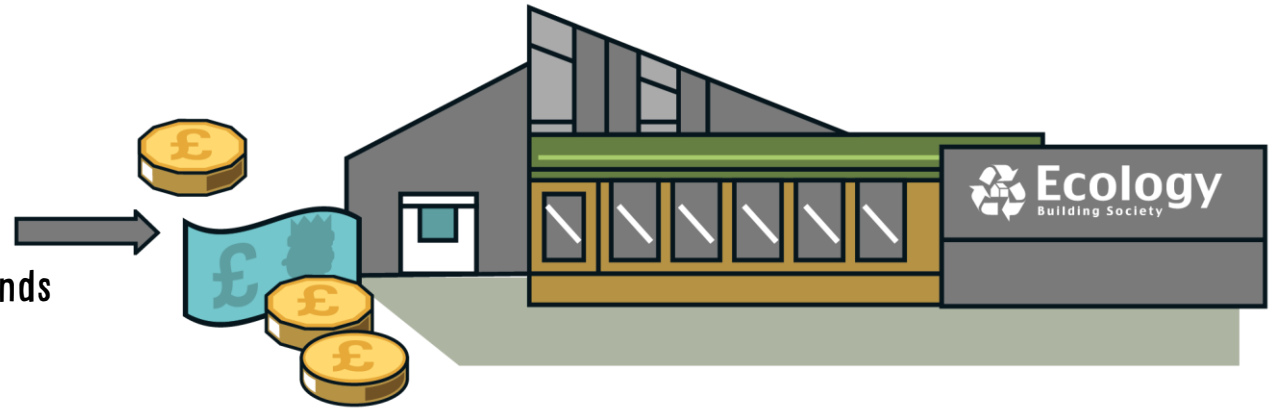
# Building Society for Beginners

Chris Newman & Tim Morgan





Savers deposit funds



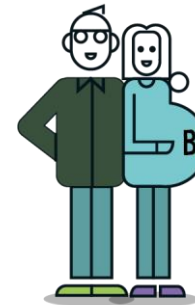
Savers may request their money

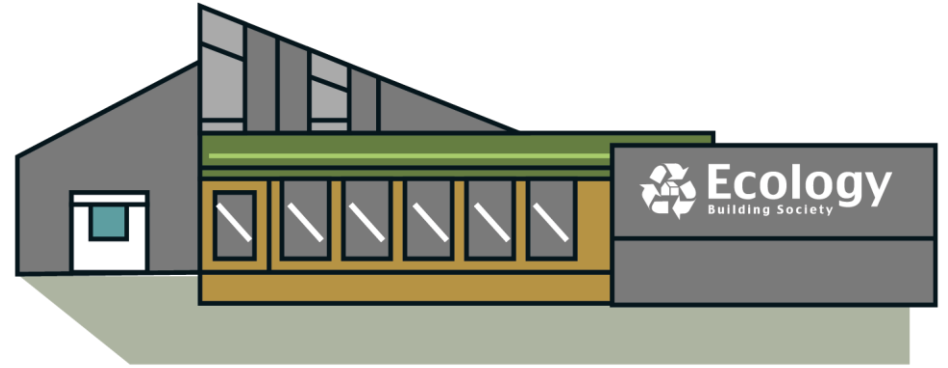
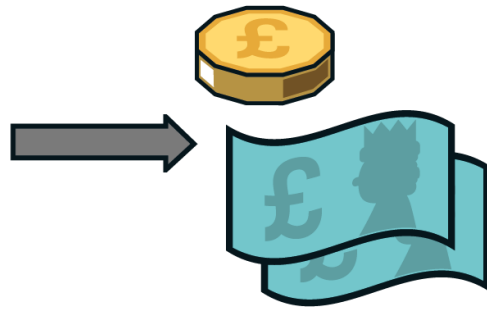
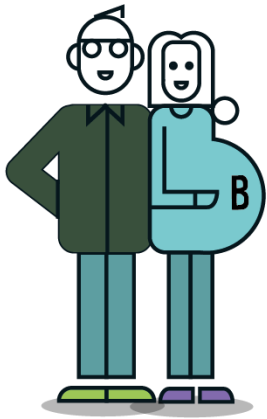


Money leaves the system as it goes to the vendor

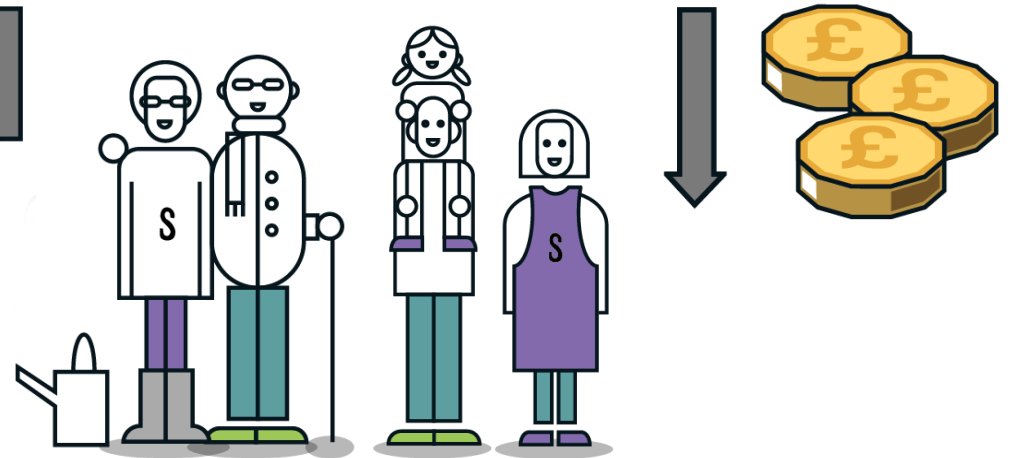


Ecology lend funds

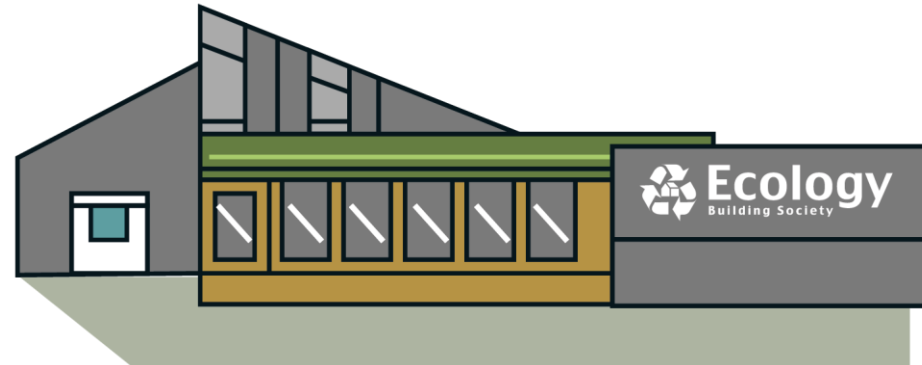




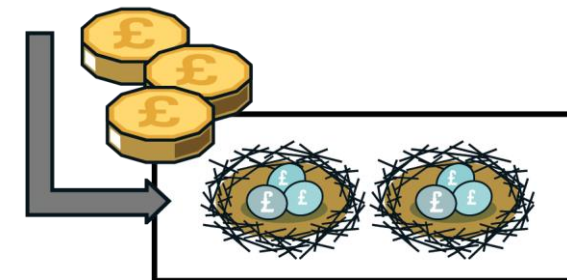
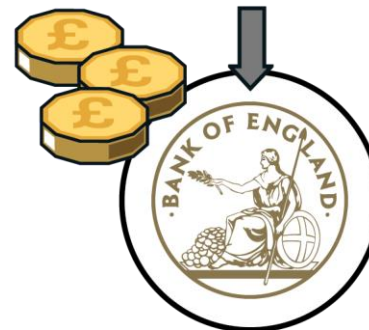
**MARGIN  
2.0%**

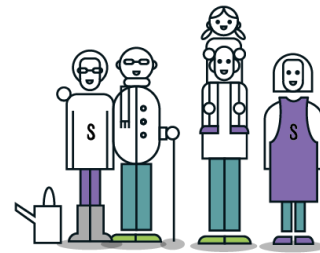
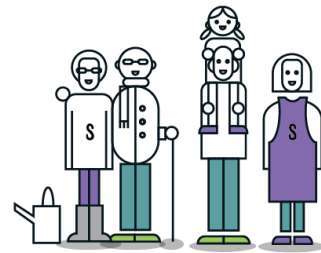
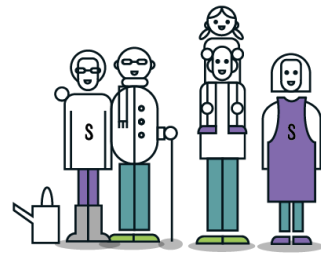
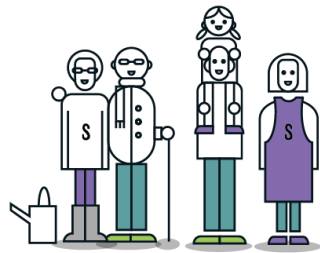
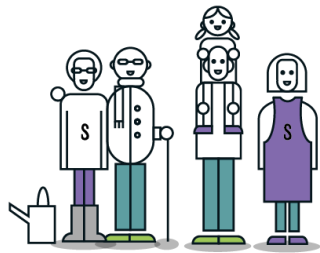
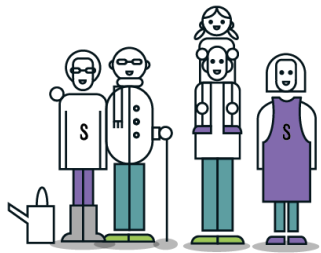




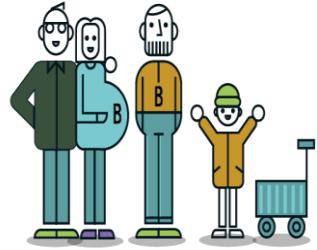
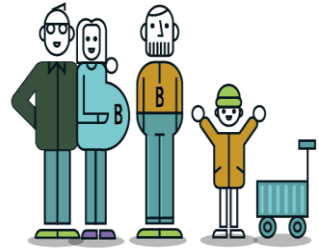
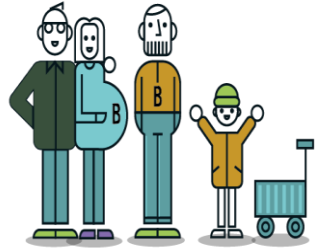
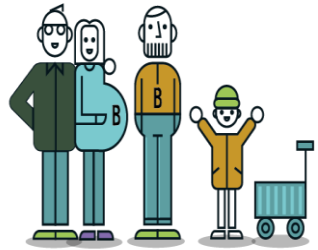
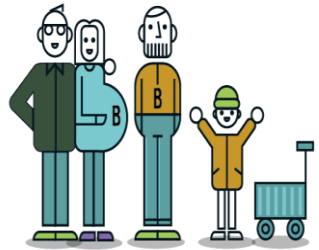
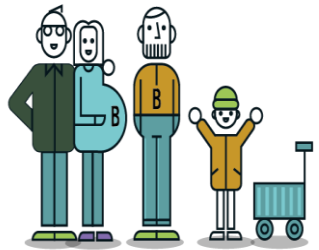


Ecology doesn't hold cash –  
it goes to other places...





Savers...



Borrowers





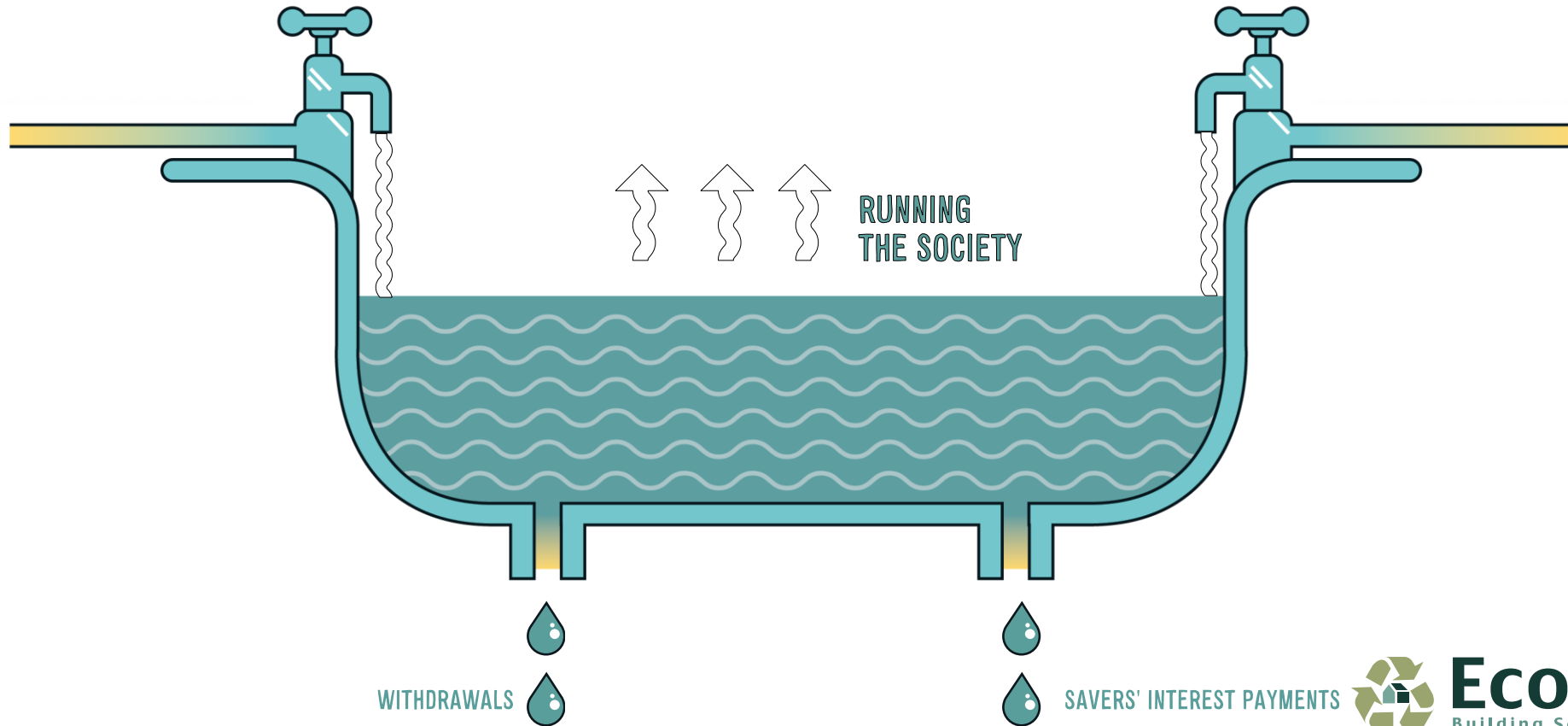
Capital can't be withdrawn like savers' cash



# Water = Assets

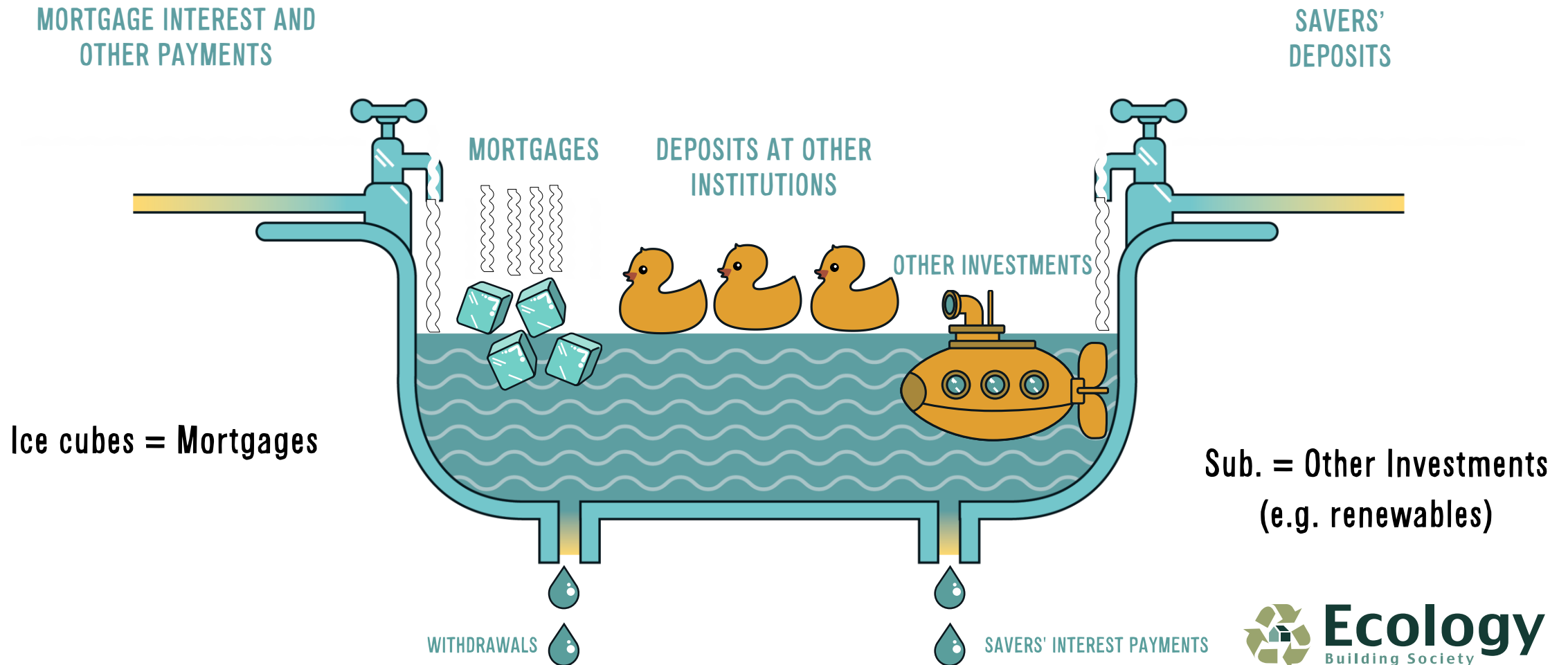
MORTGAGE INTEREST  
AND OTHER PAYMENTS

SAVERS'  
DEPOSITS

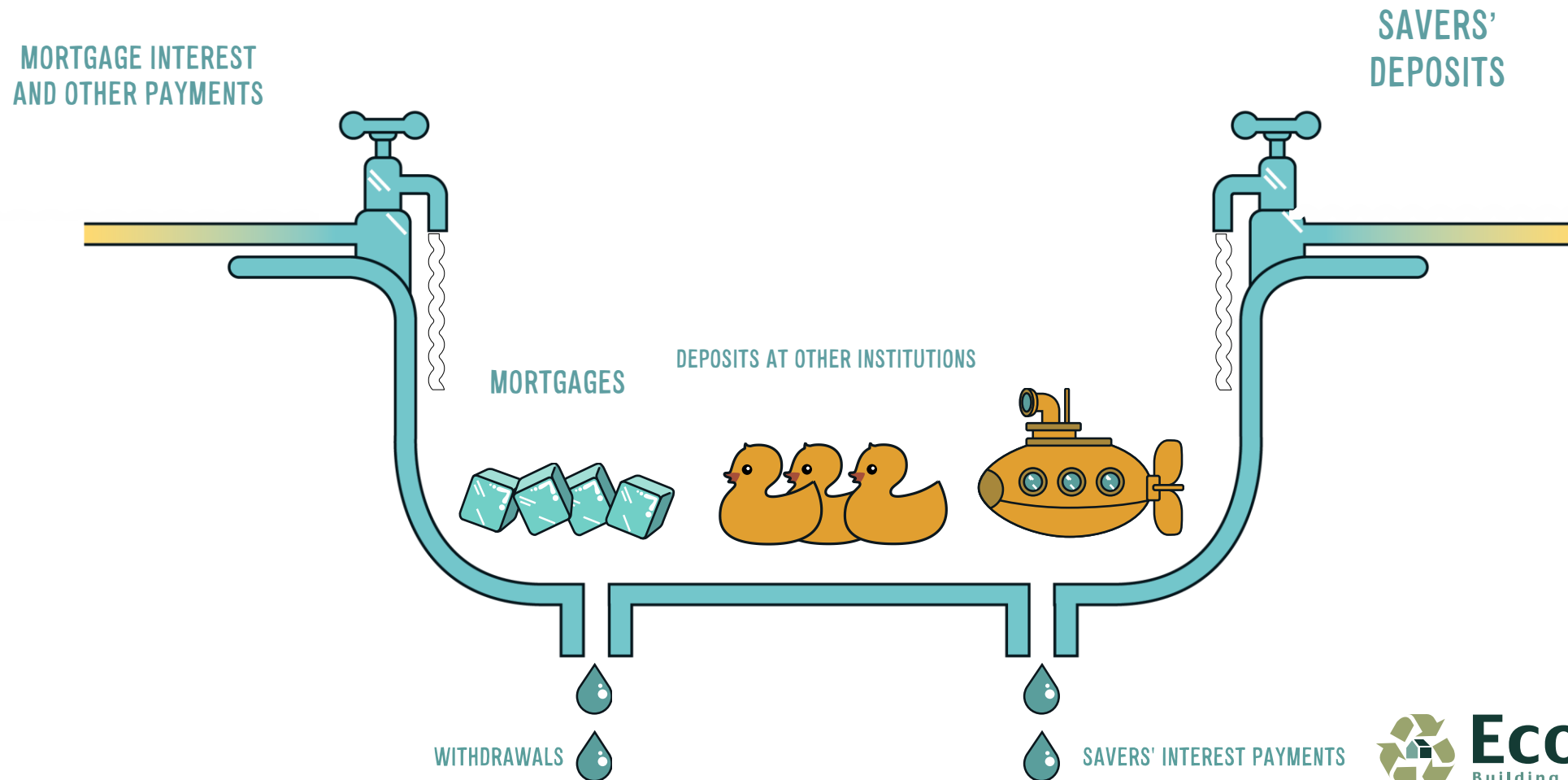




# Rubber ducks = Institutions



# All cash deposited with us is put into ice cubes, ducks or submarines



# No plug hole in the floating sink!

